

É

b

2015 F # Ì ; ”

u ... ö r

É

İ Ó ©

2016 u 1 π

..... 21

É

2015 F # İ ; ” u ... ö r

Ü Đ

1958 1959

"

" 1999

2003

2014

"

"

"

"

"

2

2015 11 15 11 30

106

U M # ĩ ; Á 5Š Đ

%•o•# ĩ é P x—Ä

c%•d# ĩ é P

2015

6028

12

1-1-1

1-1-1 2015

				343	5.69%
				178	2.95%
	824	13.67%		133	2.21%
				89	1.48%
				81	1.34%
				293	4.86%
				172	2.85%
	702	11.65%		106	1.76%
				79	1.31%
				52	0.86%
				136	2.26%
				121	2.01%
				119	1.97%
				115	1.91%
				88	1.46%
				237	3.93%
				107	1.78%
				96	1.59%
				69	1.14%
				41	0.68%
				210	3.48%
				186	3.09%
				112	1.86%
				139	2.31%
				113	1.87%
				94	1.56%
				92	1.53%
				44	0.73%
				116	1.92%
				112	1.86%
	458	7.60%			

				100	1.66%
				80	1.33%
				50	0.83%
	443	7.35%		139	2.31%
				77	1.28%
				61	1.01%
				52	0.86%
				45	0.75%
				35	0.58%
				30	0.50%
				4	0.07%
	206	3.42%		144	2.39%
				62	1.03%
	188	3.12%		94	1.56%
				59	0.98%
				35	0.58%
	257	4.26%		91	1.51%
				85	1.41%
				81	1.34%
	831	13.79%		170	2.82%
				133	2.21%
				120	1.99%
				105	1.74%
				53	0.88%
				41	0.68%
				37	0.61%
				33	0.55%
				24	0.40%
				23	0.38%
				17	0.28%
				16	0.27%
				16	0.27%
				14	0.23%
				14	0.23%
				7	0.12%
				6	0.10%
				2	0.03%
	6028	100.00%		6028	100.00%

76

c%•d5 | ; ´

2015 92.45%
83.76% 1-2-1

1-2-1 2015

		5049	83.76%	92.45%
		271	4.50%	
		205	3.40%	
		38	0.63%	
		8	0.13%	
		1	0.02%	
		1	0.02%	
		455	7.55%	

100% = / 100% = - /
+ = / 100% + + + + +

1-2-3

	100.00%		93.01%
	100.00%		92.86%
	100.00%		92.68%
	100.00%		92.44%
	100.00%		92.21%
	100.00%		92.13%
	100.00%		92.09%
	100.00%		91.89%
	100.00%		91.43%
	100.00%		91.37%
	99.25%		91.00%
	99.12%		90.12%
	98.90%		89.66%
	98.84%		88.89%
	98.82%		88.71%
	98.50%		88.30%
	98.08%		88.00%
	97.73%		87.85%
	97.53%		87.80%
	97.32%		86.61%
	96.74%		85.71%
	96.67%		83.53%
	96.59%		83.33%
	96.53%		78.79%
	95.83%		77.50%
	95.71%		77.36%
	95.65%		76.47%
	95.63%		68.57%
	94.68%		62.50%
	94.21%		59.32%
	94.12%		57.38%
	94.09%		52.17%
	93.33%		50.00%
	93.26%		92.45%

2015

2.

2015

300

71.19%

26.30%

23.20%

50

15.08%

1-3-1

1-3-1

%

50	17	1.09	0.92	23.20	0.42	0.08	1.42	
50-300		2.18	3.43	26.30	1.51		0.75	
300-1000		0.67	2.26	8.96	1.17	0.08	0.42	
1000	08	0.84	8.46	12.73	2.26	0.08	0.42	
	25	4.77	15.08	71.19	5.36	0.25	3.02	

/

2015

3.

18.68%

15.08%

14.74%

1-3-2

1-3-2 2015

%

		18.68	3.43
		15.83	3.18
		14.74	3.02
		8.54	2.93
		8.12	2.68
		4.02	2.26
		3.77	2.01
		3.52	

4.

2015 23.30%
 21.36% 13.23% 1-3-3

1-3-3 2015

			%
	23.20	/	10.22
	21.36		9.88
	13.23		4.10
	11.81	/ / /	2.93

2015

☐☐

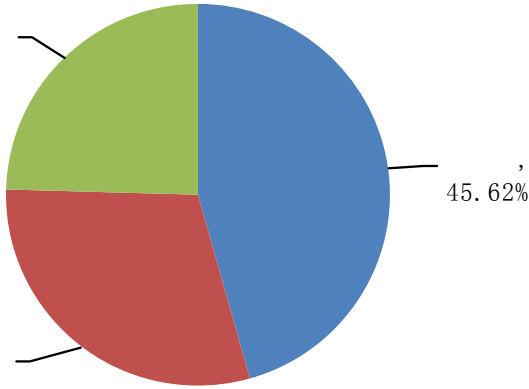
1.

92.98%

71.93

2.

54.38% 45.62% / 1-3-4



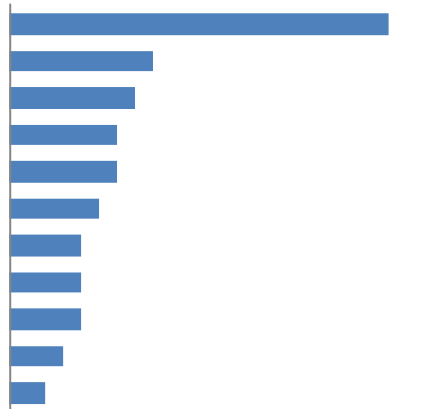
1-3-4
2015

□

2015 70 4.71%

1.

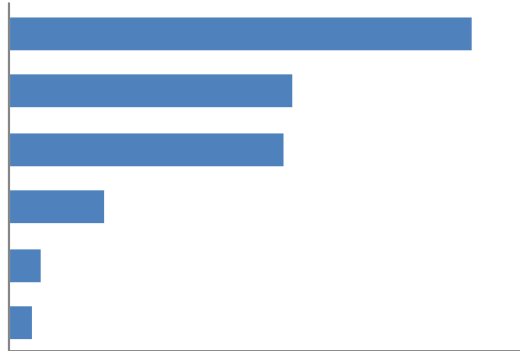
2015 11.43% 10.00% 30.00% 1-3-5



1-3-5 %
2015

4.

1-3-8 62.86% 38.57%

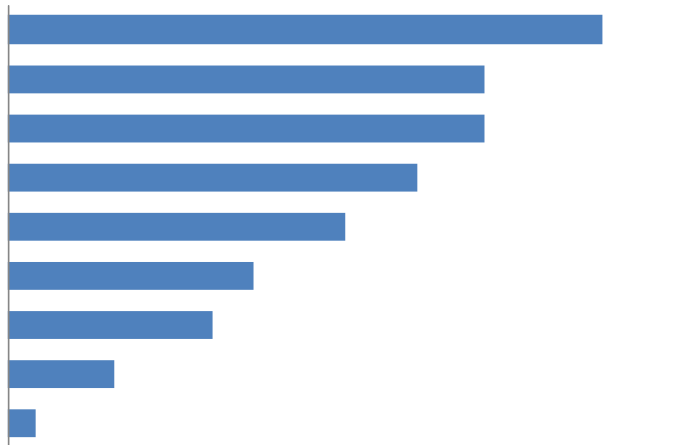


1-3-8 %
2015

□

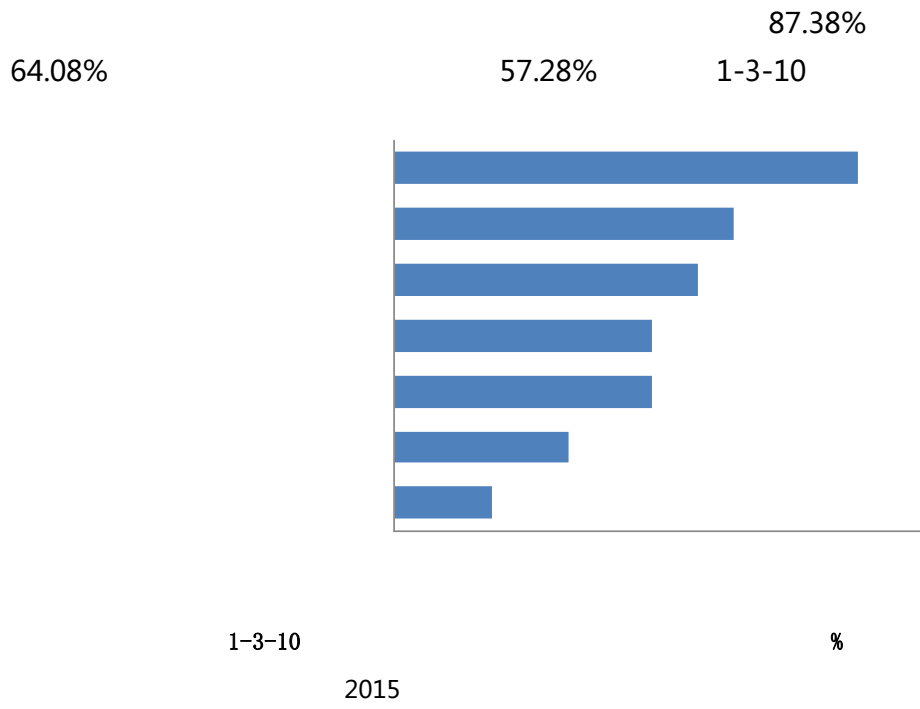
1.

69.90% 69.90% 1-3-9 87.38%

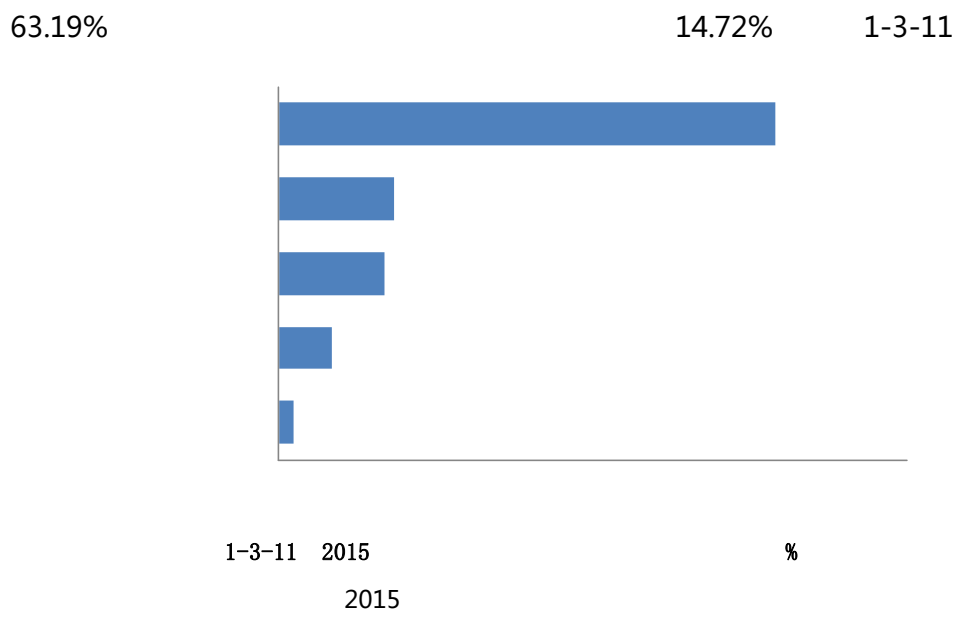


1-3-9 2015 %
2015

2.



3.



∅M ; V ∈ ∅

%•o•Ž á# ĩ; é[[3r

c%•d",³... Qgμsμ8? ;

2005 4

" " " "

∅6∅

∅ ∅ ∅ ∅∅ ∅∅ ∅

" " " "

" " 2015 9 63 16

76Đ

c%•d² ê p g — _ Ĩ πC⁻ g • I % Û ¥ é ; , §

▣▣▣▣

11 23 80
310 2015 8000

▣▣▣▣

500

▣▣▣▣

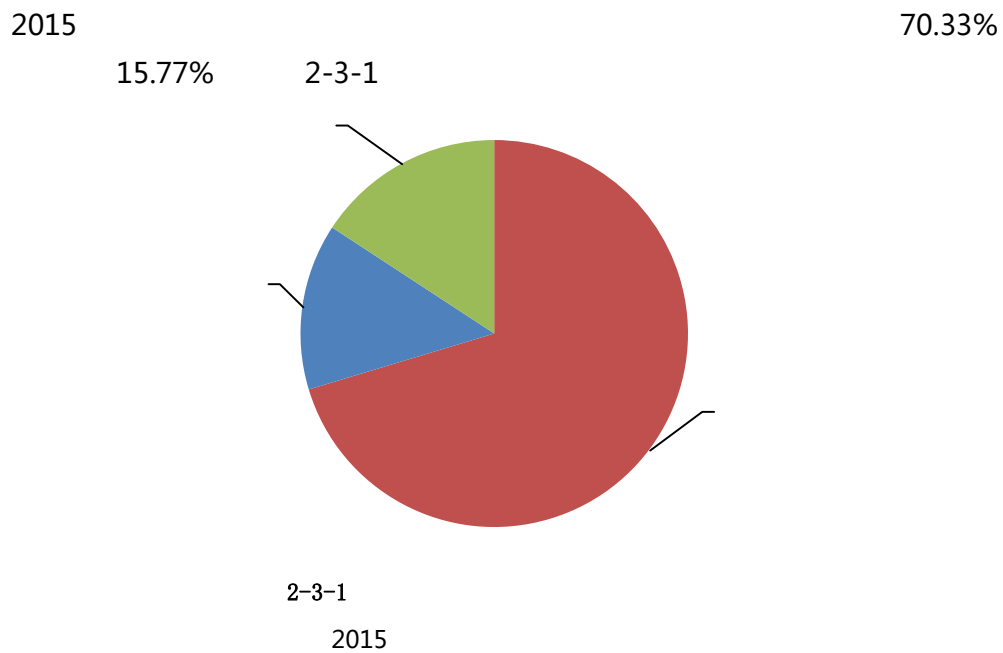
15

2015 600

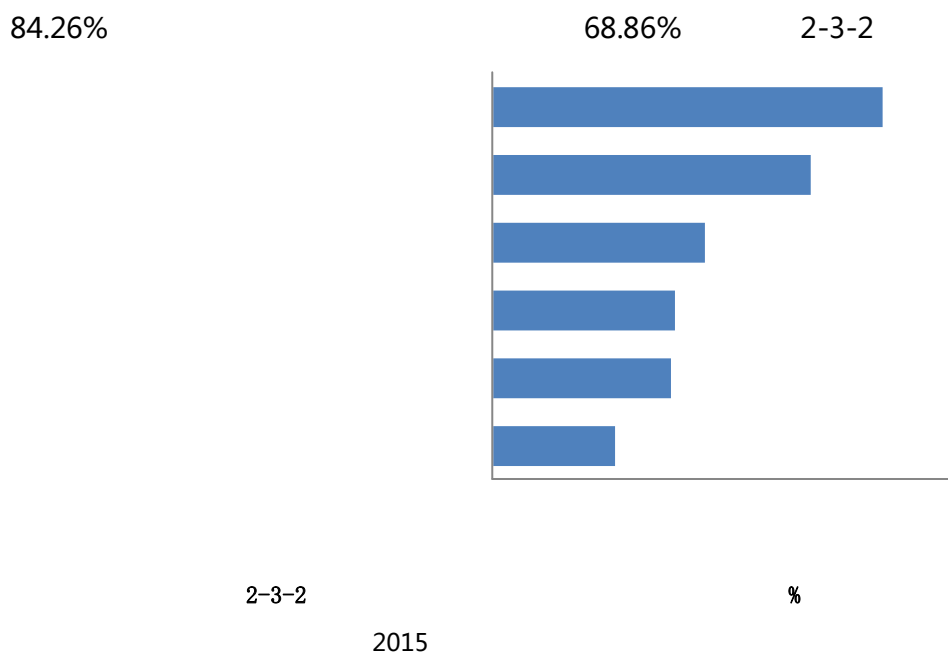
§ / é , § é j ^

c%•d * ; , § é j ^

1.



2.



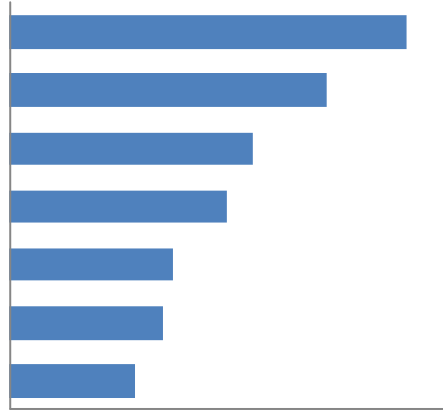
75

1.

62.86%

/
2-3-3

50.00%



2-3-3

%

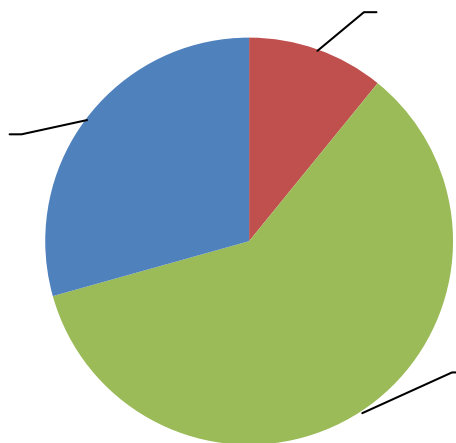
2015

2.

10.86%

59.79%

2-3-4

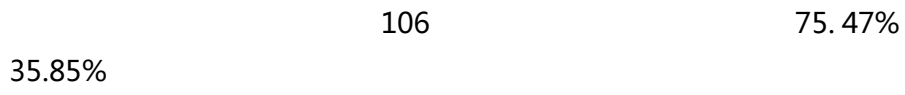


2-3-4

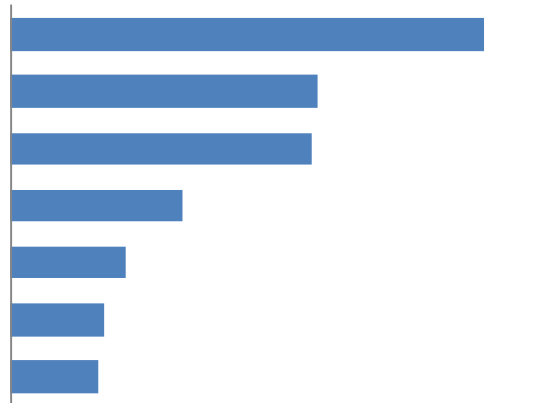
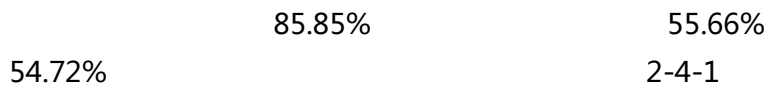
2015

1.

1.



2.



2-4-1

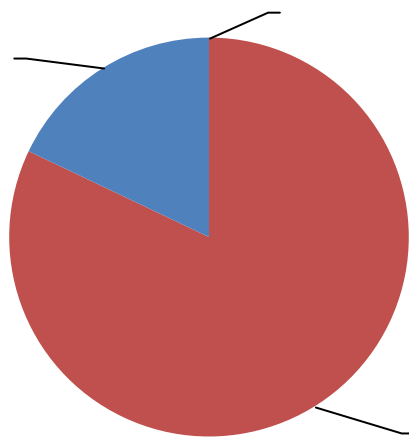
%

2015

3.

17.92%

82.08%
2-4-2



2-4-2

2015

M ; ü » â Å

%•o•W ž â Å

1.

3319.79 /

2015

2.

2015

3989.19

2978.61

3-1-1



3-1-1 2015

2015

5.

2015
 4258.89 3644.32 3516.67
 2781.25 3-1-3
 3-1-3 2015

	4258.89		3249.22
	3644.32		3100.00
	3516.67		3073.20
	3387.80		3018.42
	3387.01		2948.78
	3362.50		2912.33
	3324.71		2781.25
	3262.77		3319.70

2015

6.

2015 3644.92
 3513.99 3461.18 3-1-4
 3-1-4 2015

	3644.92	/ / /	3180.00
	3513.99		3030.63
	3461.18		2975.51
	3426.41	/	2908.20
	3319.70		3319.70

2015

7e 

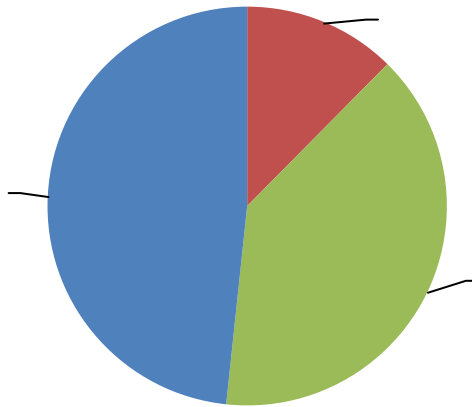
1.

" " "

2015

51.68%

3-2-1



3-2-1
2015

2.

80.39%

44.12% 3-2-1

3-2-1 2015

			%
	80.39		52.63
	63.64		49.06
	56.72		47.60
	56.25		47.22
	54.90		45.28
	52.63		44.12
	51.68		51.68

2015

3.

3-2-2

3-2-2 2015

%

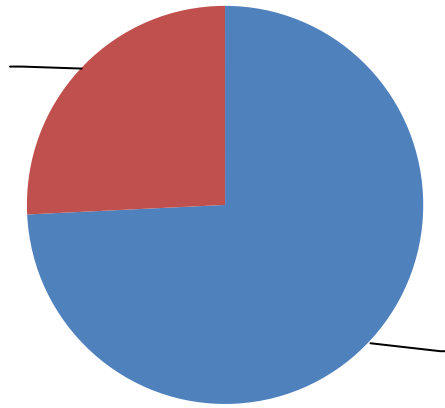
	82.93		52.38
	75.00		50.00
	60.71		50.00
	60.00		50.00
	59.09		48.39
	58.33		47.83
	55.56		46.99
	54.17		46.27
	54.17		44.44
	53.85		40.63
	53.23		37.84
	52.63		31.82
	52.38		51.68

2015



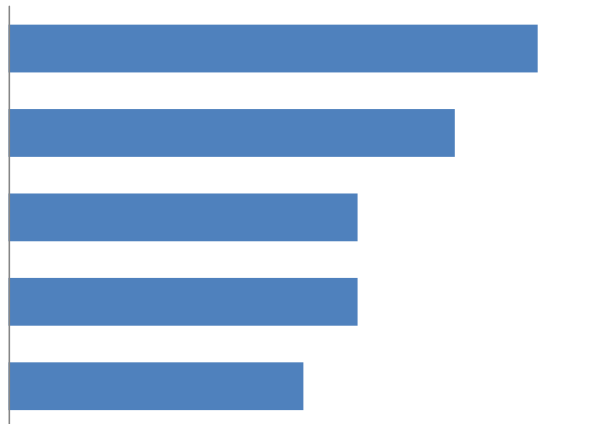
1.

74.23% 25.77% 2015



3-3-1
2015

74.23% 69.45%
58.59% 3-3-2



3-3-2

%

2015

2.

84.21%

57.89%

3-3-1

3-3-1

2015

			%
	84.21		74.52
	81.34		73.44
	80.88		72.22
	78.13		70.59
	77.36		64.71
	75.00		57.89
	74.23		74.23

2015

3.

95.83%

90.24%

88.89%

3-3-2

3-3-2

2015

			%
	95.83		72.97
	90.24		72.92
	88.89		71.43
	88.89		71.05
	87.50		70.37
	86.96		68.75
	86.36		68.67
	86.36		68.66
	84.21		66.67
	80.95		66.67
	80.36		64.52
	79.17		58.00
	77.42		57.69
	75.00		74.23

2015

4.

87.50%

61.43%

3-3-3

3-3-3

2015

			%
	87.50		75.49
	81.58		74.29
	80.42		73.81
	79.38		71.11
	79.17		68.29
	78.13		66.67
	77.78		61.43
	77.27		74.23


2015

5.

92.31%

79.75%

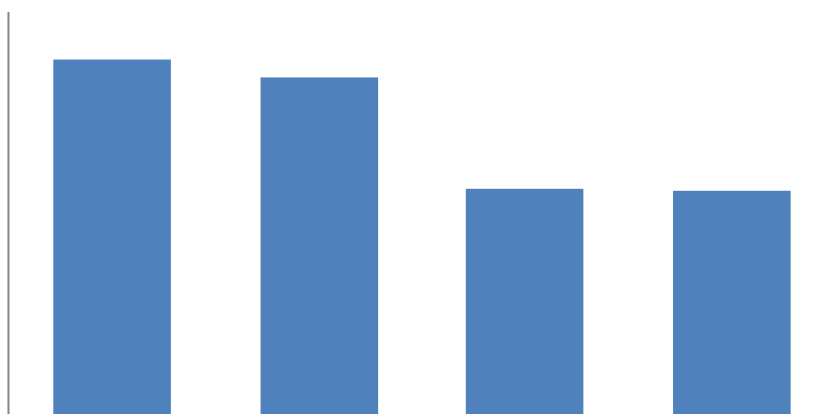
49.65% /

TM 

c%•d (É´

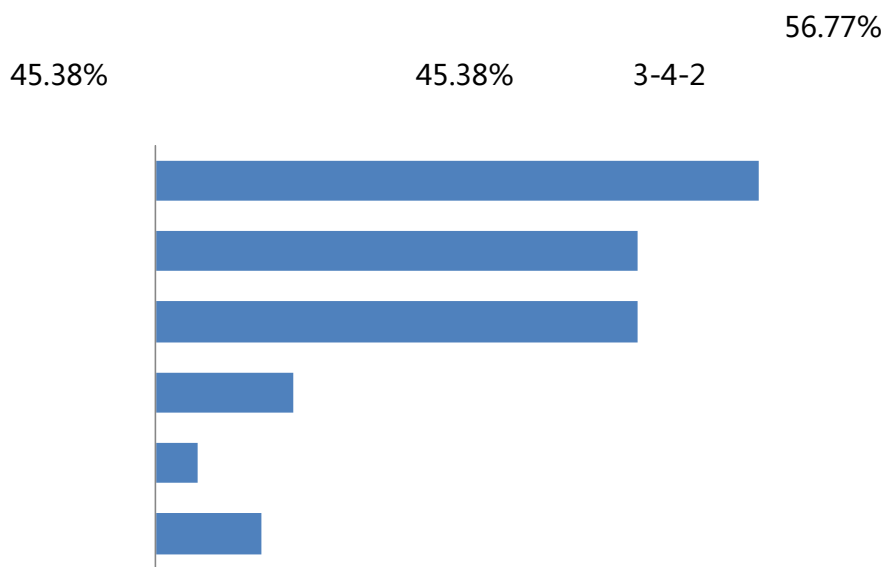
" " 2015
= " " / +

3-4-1
79.75% 58.14% 75.71%
2015



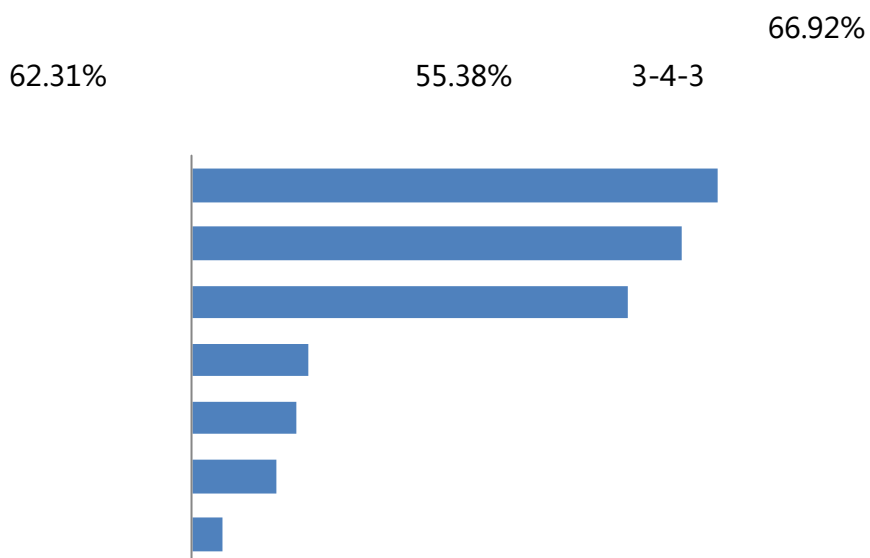
3-4-1 2015 %

7d \ # É 2 €




3-4-2 %
2015

8



3-4-3 %
2015

; ● 

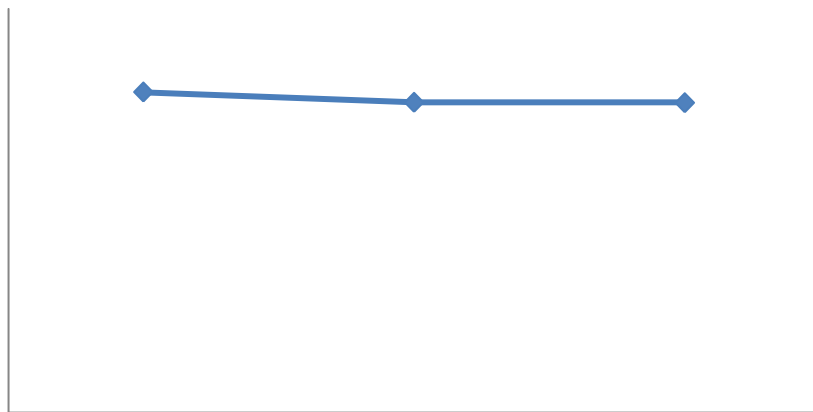
3-5-1 39.16% 35.15%

UM ; FI® â Å

%•0• ; 'l ®

c%•d5 | ; 'l ®

2014 2015 2013 95.56%
92.00% 4-1-1



4-1-1 2013-2015

%

VI

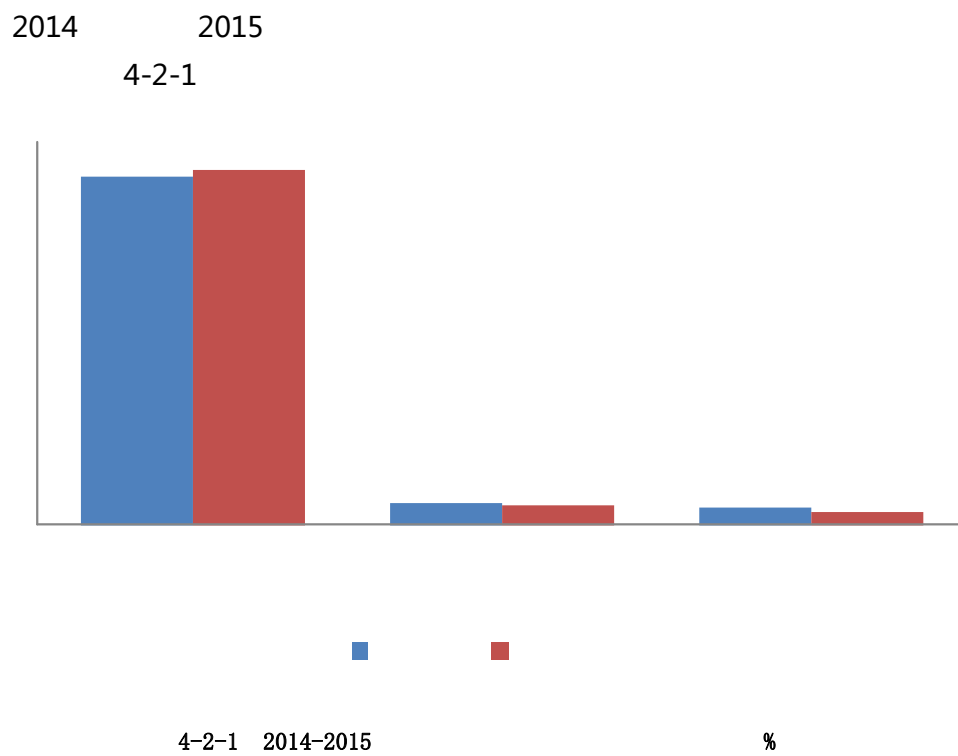
6

4-1-1

4-1-1 2013-2015

								%
	2013	2014	2015		2013	2014	2015	
	98.26	99.38	100.00		98.23	99.10	94.09	
	97.56	86.05	100.00		88.59	91.95	93.26	
	99.00	99.61	100.00					

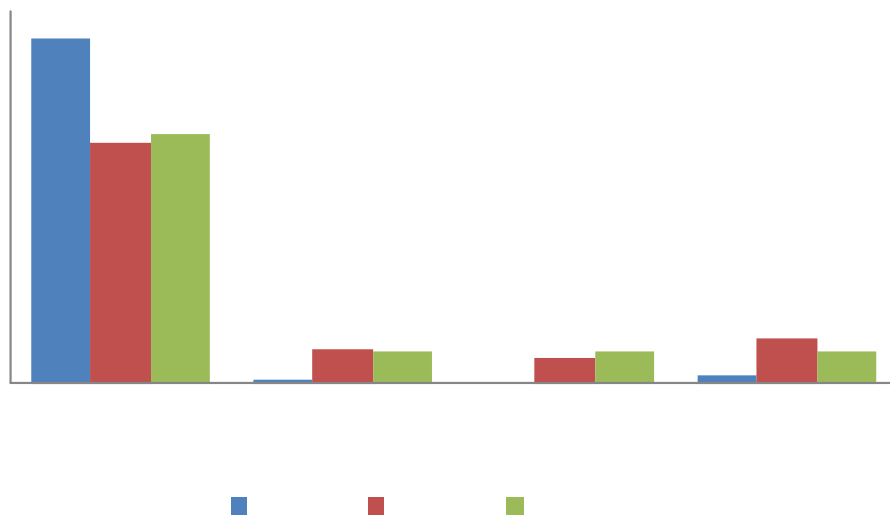
70





2013 2014 2015

4-3-1 .



4-3-1 2013-2015

%

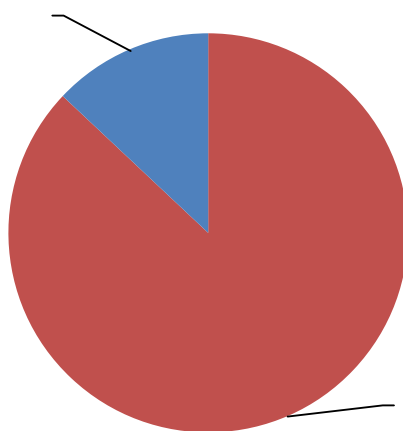
U M * _ Ò _ é E §

%•o•# ï * _ Ò _ é E §

c%•d _ V € j ^

2015
5-1-1

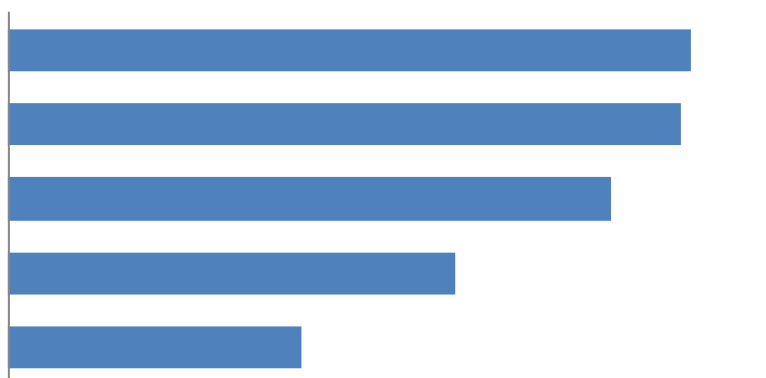
/ 87.02%



5-1-1 2015
2015

87.02%

5-1-2

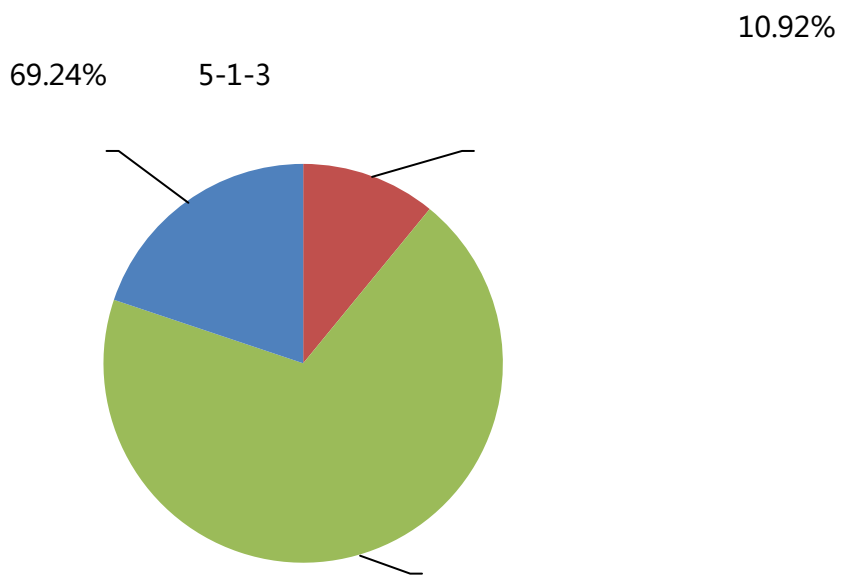


5-1-2

%

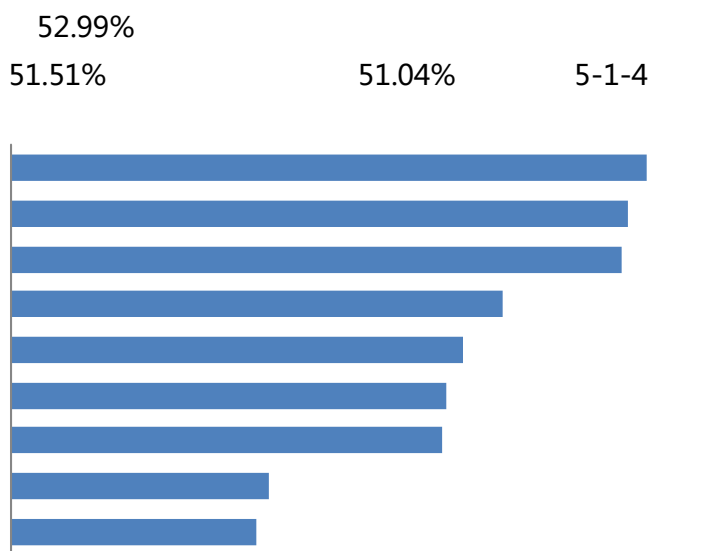
2015

7 d f



5-1-3
2015

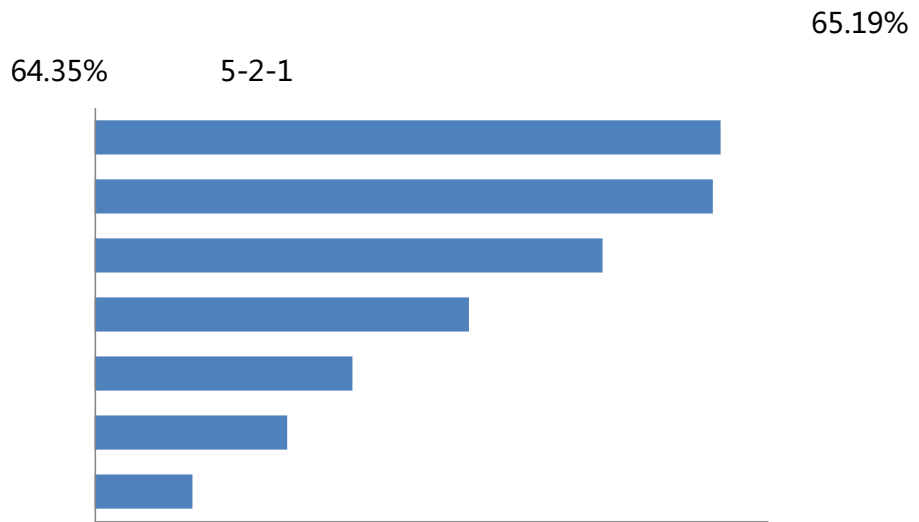
□



5-1-4 %
2015

7

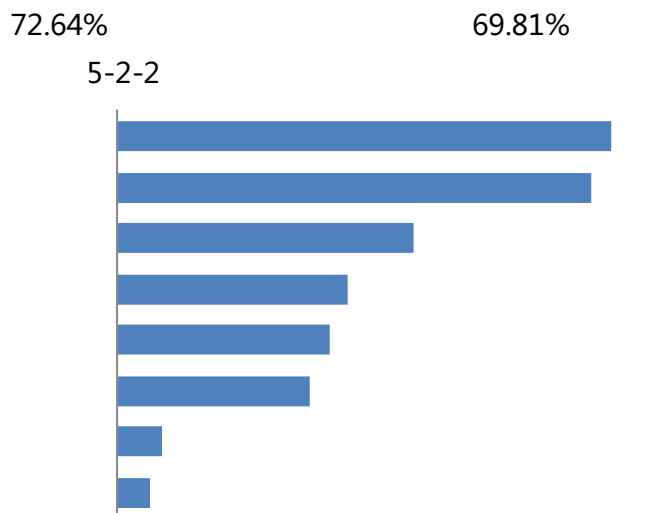
c%•d# İç j



5-2-1 %
2015

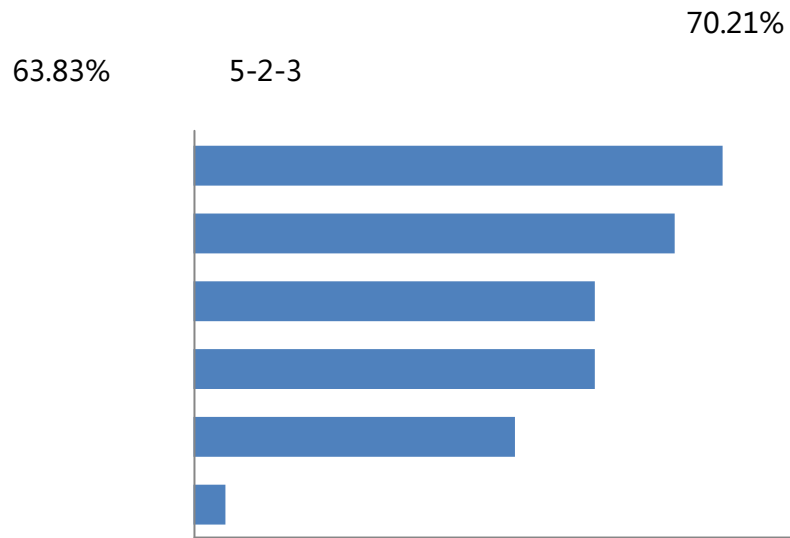
8

1.



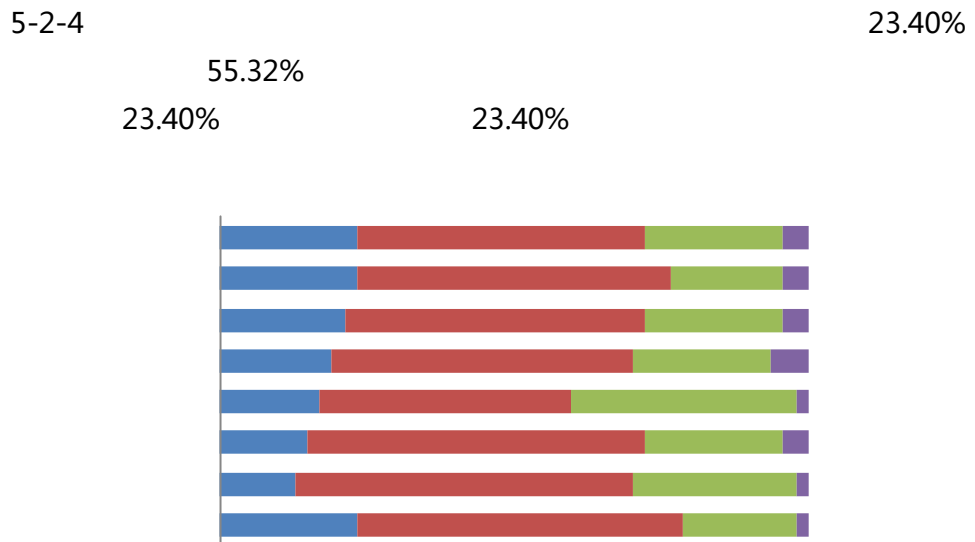
5-2-2 %
2015

2.



5-2-3
2015 %

3.

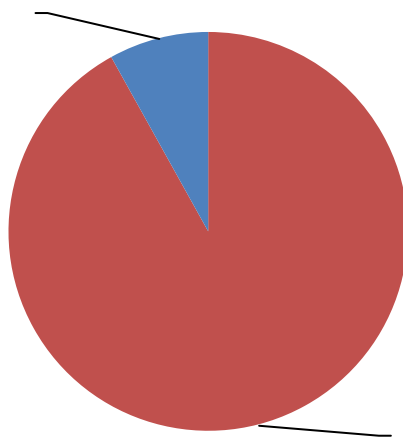


5-2-4
2015 %

Ü..

2015
5-3-1

91.93%



5-3-1
2015